

# CRAVEN COUNTY

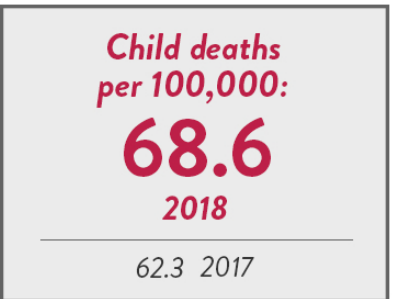
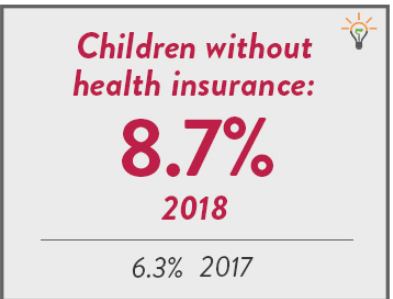
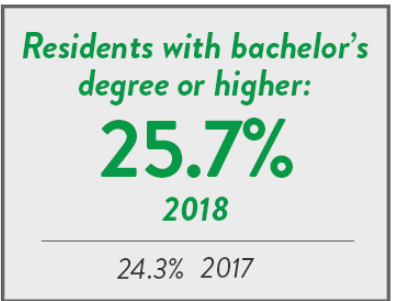
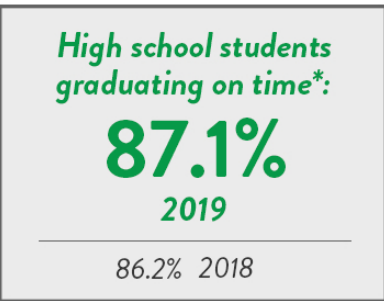
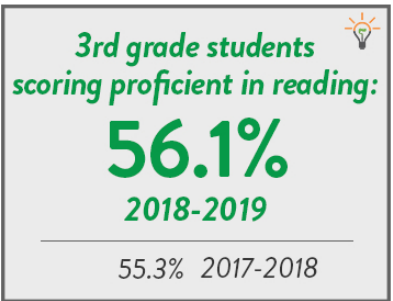
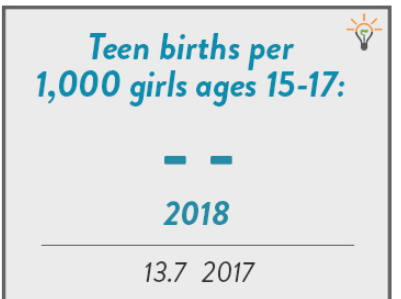
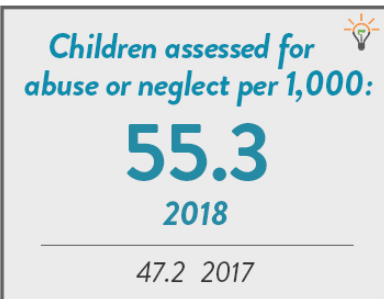
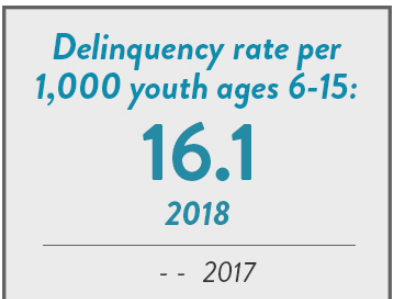
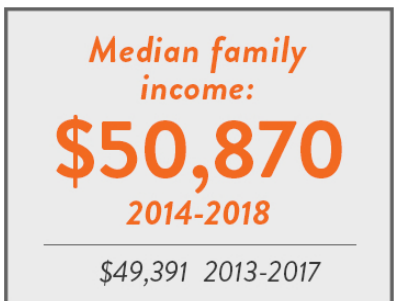
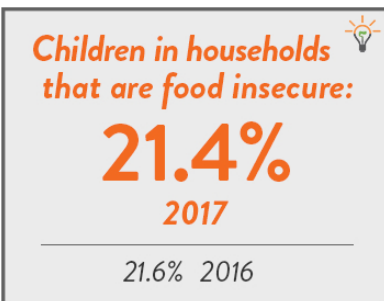
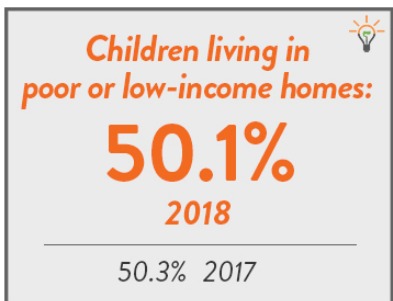
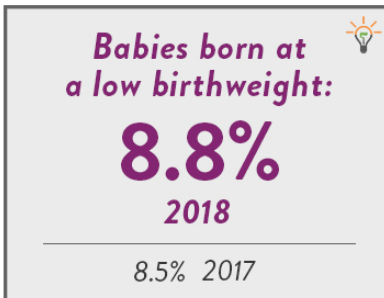
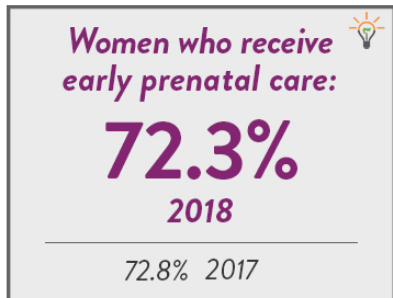
## 2020 NC DATA CARD

### NORTH CAROLINA

Child population: 2,311,348  
 Percent under age six: 31%  
 Number of live births: 118,957

### CRAVEN

Child population: 26,472  
 Percent under age six: 33%  
 Number of live births: 1,337



NC Pathways to Grade-Level Reading whole-child Measure of Success.  
 Learn more at: [www.buildthefoundation.org/pathways](http://www.buildthefoundation.org/pathways).

**NC Child**  
 The Voice for North Carolina's Children

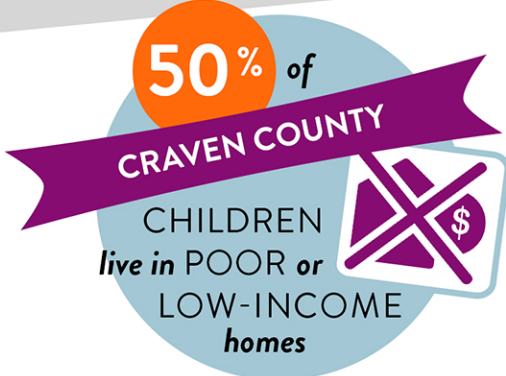
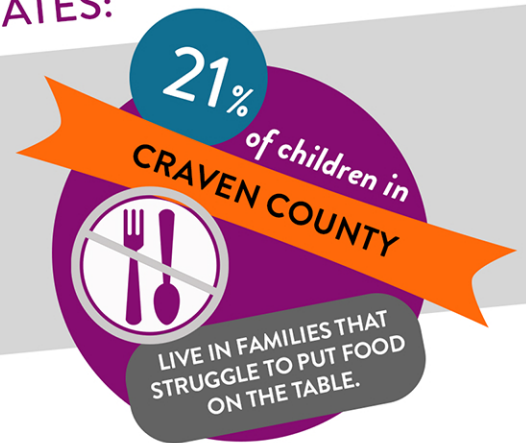
## → HERE'S WHAT IS CHANGING FOR KIDS SINCE THE PANDEMIC STRUCK

Fallout from the Coronavirus pandemic has meant that many more families are struggling with basic needs. These County Data Cards highlight key indicators of child well-being that elected officials should track, and respond to, in their communities.

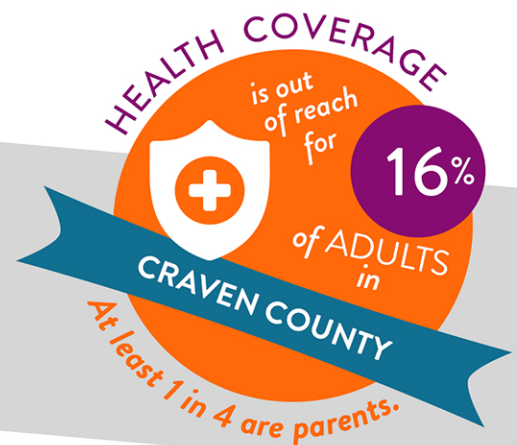
- These data benchmarks indicate how North Carolina's children were faring before COVID-19 struck.
- Many families are fighting new and increased stressors like job loss, hunger, untreated health concerns, and isolation away from community support. Traumatic episodes like these are shown to have long-term impacts on children's healthy development.
- Officials should use these data points as a baseline and watch for changes as we move from emergency response into long-term recovery.

## QUESTIONS for ELECTED OFFICIALS and CANDIDATES:

**1** Many families are experiencing hunger for the first time. School and child care-based feeding programs have become lifelines in many communities. *What is your plan to ensure families can continue meeting basic needs, like affordable food?*



**2** When the emergency period ends, a second crisis will hit many families. Parents and caregivers will have to pay off months of housing, utilities, and other bills that were put on hold. *What policies will you focus on to help families who are financially struggling to make ends meet so they can provide for their children?*



**3** Hundreds of thousands of North Carolina families have lost the health insurance they previously received through their jobs. *What is your plan to get affordable health coverage to more parents and caregivers in North Carolina?*

*Share this County Data Card with leaders and elected officials in your community!*