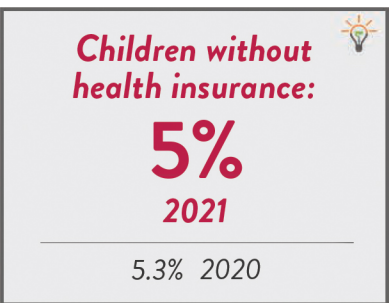
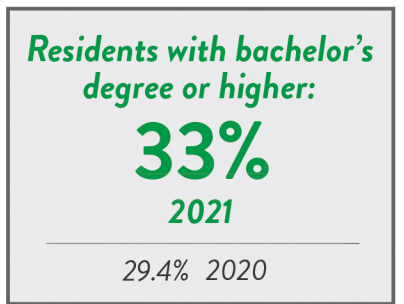
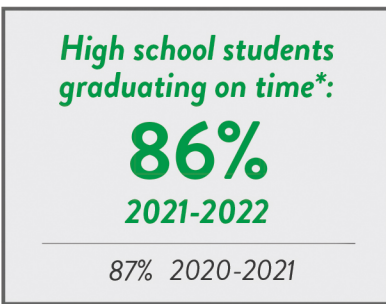
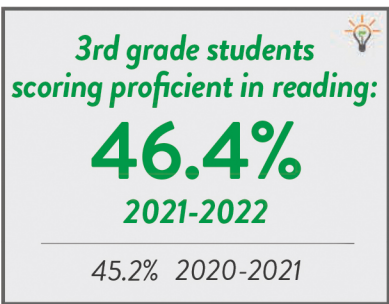
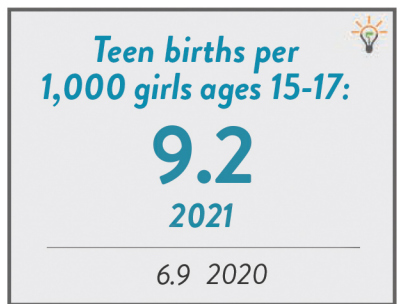
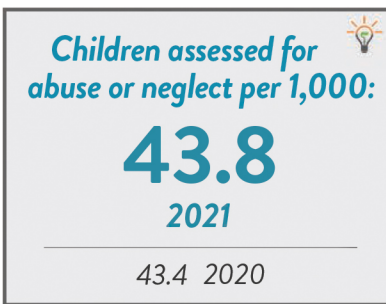
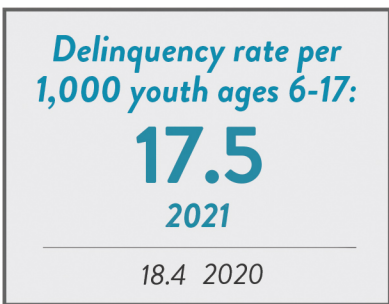
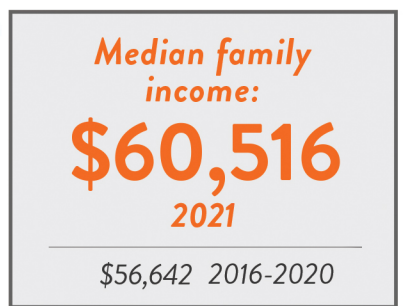
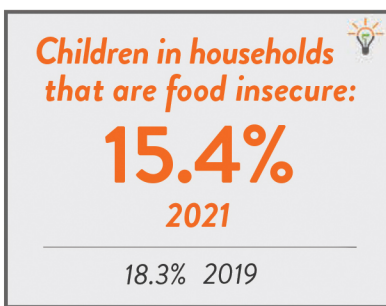
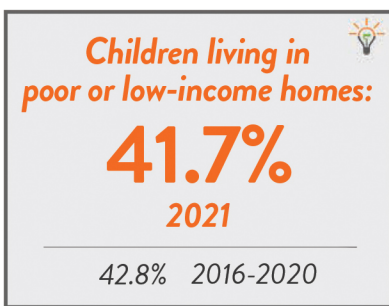
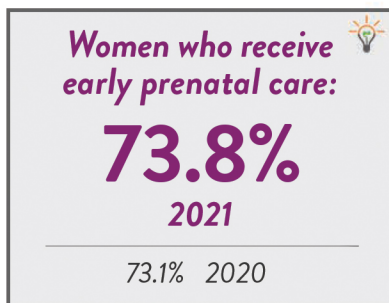


NORTH CAROLINA

2023 NC DATA CARD

Child population: 2,257,066
 Percent under age six: 24%
 Number of live births: 120,501



NC Pathways to Grade-Level Reading Measures of Success.
 Learn more at:
buildthefoundation.org/pathways



*Percentage is not reported if it is greater than 95% or less than 5%

For complete data notes and sources, visit ncchild.org
 Contact Luna Homsy at luna@ncchild.org with any questions.

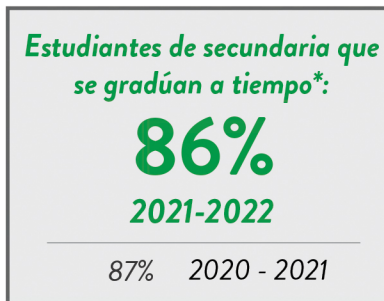
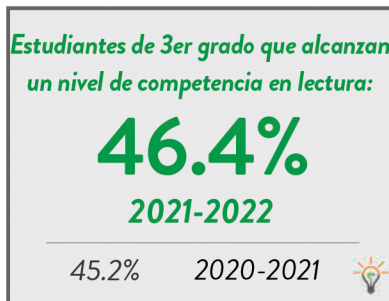
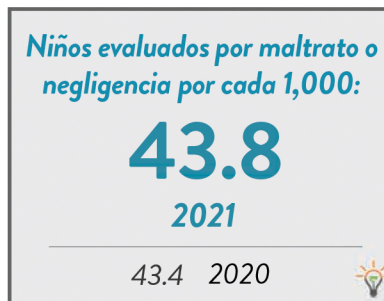
CAROLINA DEL NORTE

2023 NC TARJETA DE DATOS

Población infantil: 2,257,066

Porcentaje de niños menores de seis años: 24%

Número de niños nacidos vivos: 120,501



Criterios de éxito de NC Pathways para alcanzar un nivel de lectura correspondiente con su grado. Más información: buildthefoundation.org/pathways



*El porcentaje no se reporta si es superior al 95% o inferior al 5%

Para consultar todos los datos y fuentes, visite www.ncchild.org.

Para cualquier pregunta, comuníquese con Luna Homsí: luna@ncchild.org