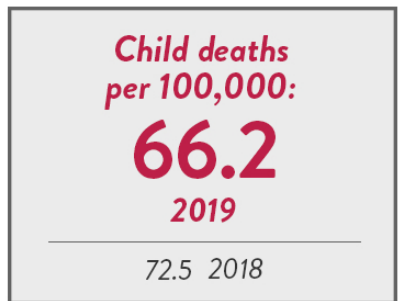
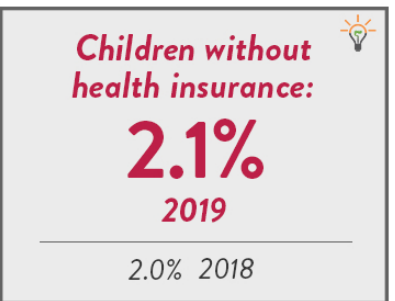
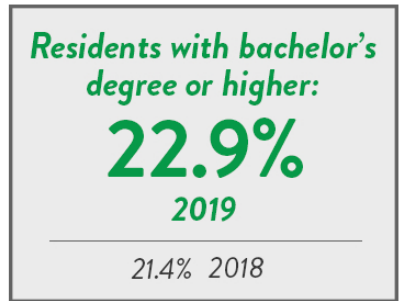
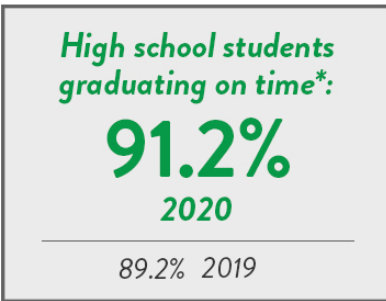
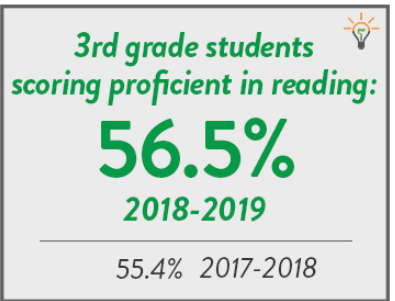
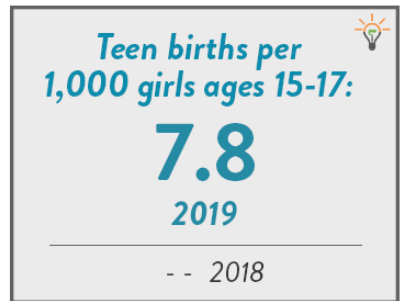
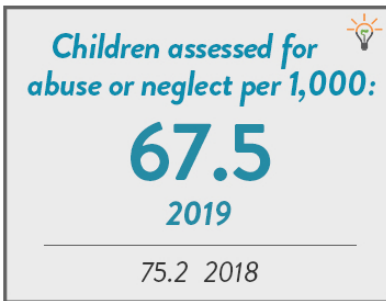
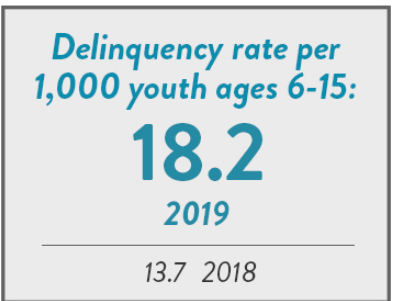
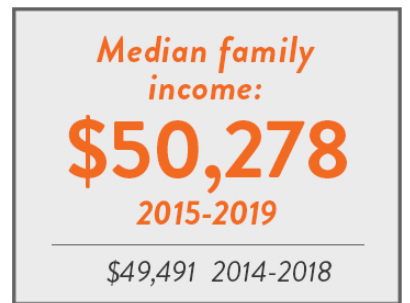
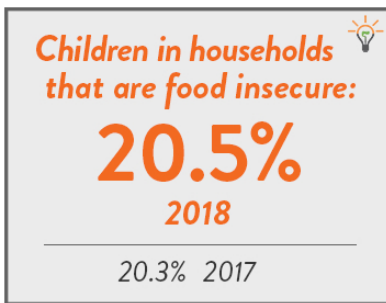
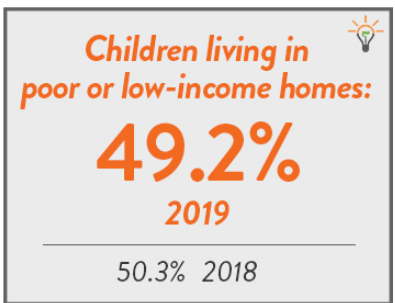
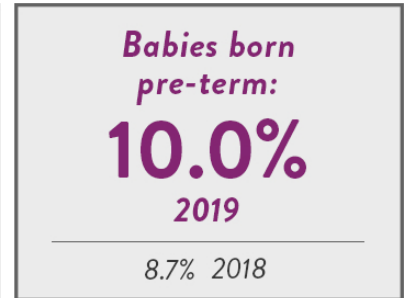
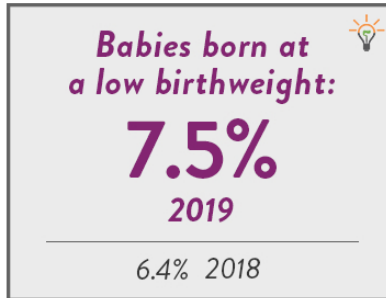
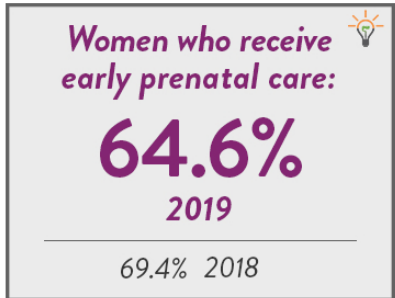


NORTH CAROLINA

ONSLOW

Child population: 2,311,620
 Percent under age six: 31.5%
 Number of live births: 118,725

Child population: 61,453
 Percent under age six: 39.5%
 Number of live births: 3,821



*Percentage is not reported if it is greater than 95% or less than 5%.



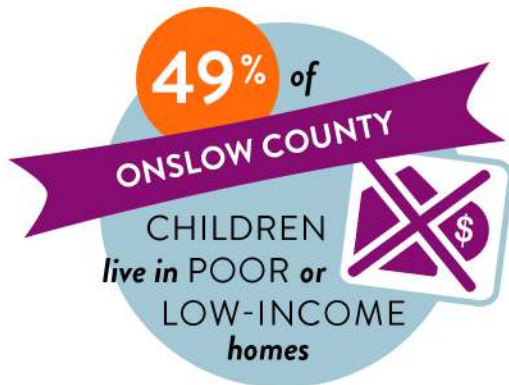
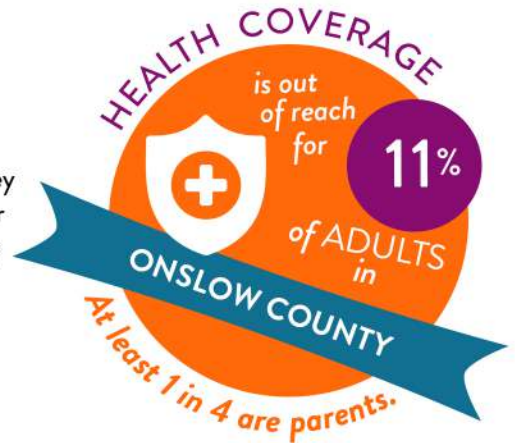


Key data points for families in
ONSLOW
COUNTY

Using every tool for pandemic recovery

HEALTH COVERAGE IS KEY FOR FAMILY FINANCIAL STABILITY.

Hundreds of thousands of North Carolina families have lost the health insurance they previously received through their jobs. Congress has put forward major incentives for states like North Carolina to expand health coverage to those who did not previously qualify for either Medicaid, or subsidies under the Affordable Care Act.



LOW INCOMES, JOB LOSS, AND PERSISTENT POVERTY.

Poverty is one of the most important factors affecting a child's long-term health and development. Those who were earning the lowest wages before the pandemic have been most likely to lose jobs and suffer long-term hardship.

Share this County Data Card with leaders and elected officials in your community!

About the County Data Cards



These County Data Cards highlight key indicators of child well-being that help policy-makers understand where to target relief so that it is most sustainable and effective.

- These data benchmarks indicate how North Carolina's children were faring before COVID-19 struck.
- Many families are fighting new and increased stressors like job loss, hunger, untreated health concerns, and isolation from community support. Traumatic episodes like these are shown to have long-term impacts on children's healthy development.
- Officials should use these data points as a baseline and watch for changes as they allocate funds and adopt policies focused on long-term recovery.